

Manual with instalation proces Toyota JZ enignes with JAGUAR 8HP70 XJ 351 3.0

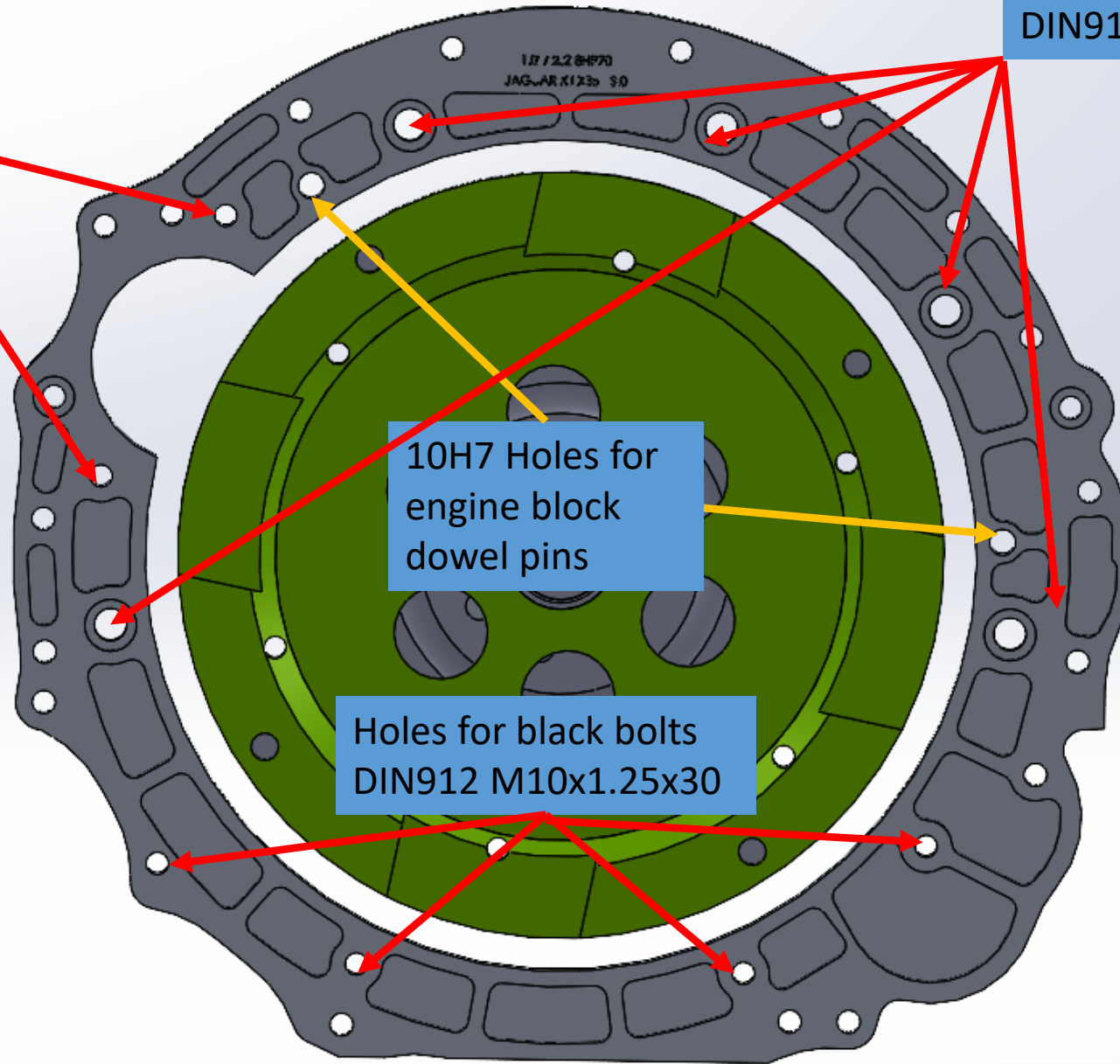
www.adamat.com.pl

E-mail: adamat@poczta.onet.eu

1. Adapter installation on engine

M10 holes for starter motor.
Use silver bolts
DIN912 M10x65
See next page

Holes for black bolts
DIN912 M12x1.25x25



10H7 Holes for engine block dowel pins

Holes for black bolts
DIN912 M10x1.25x30

4. 1JZ / 2JZ twin clutch flywheel instalation.

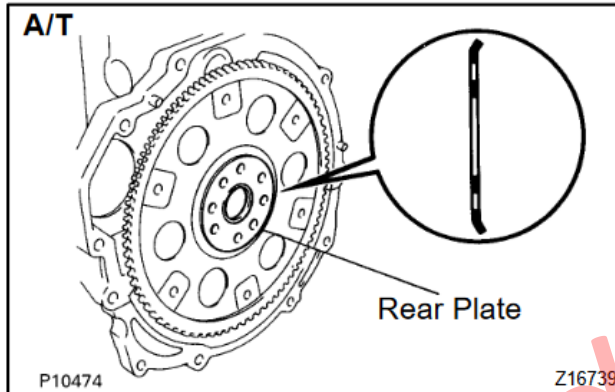
We use OEM Toyota flexplate:

Drive Plate: 32101-30090.

Spacer, Drive Plate, Front: 32116-22020.

Spacer, Drive Plate, Rear: 32117-22020.

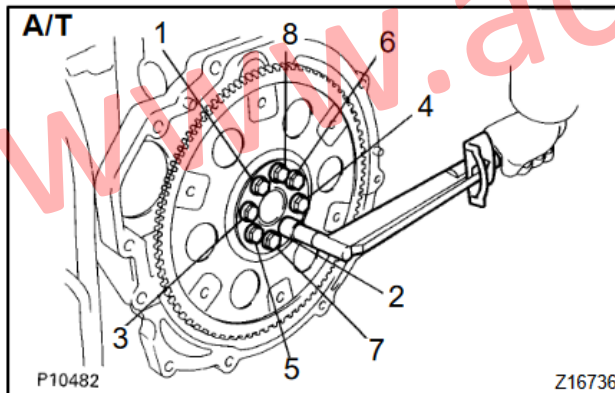
Torque for Toyota flexplate as Toyota service requirement.



33. **A/T:**

INSTALL DRIVE PLATE

(a) Install the front spacer, drive plate and rear plate on the crankshaft.



(b) Apply adhesive to 2 or 3 threads of the mounting bolt end.

Adhesive:

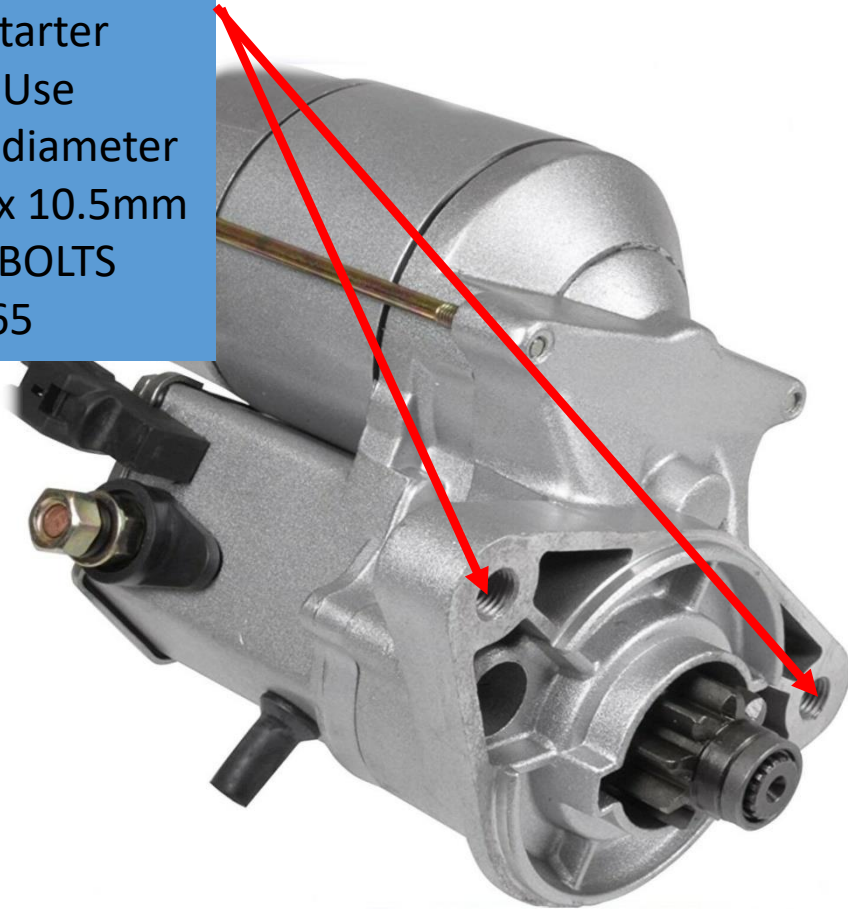
Part No. 08833-00070, THREE BOND 1324 or equivalent

(c) Install and uniformly tighten the 8 bolts, in several passes, in the sequence shown.

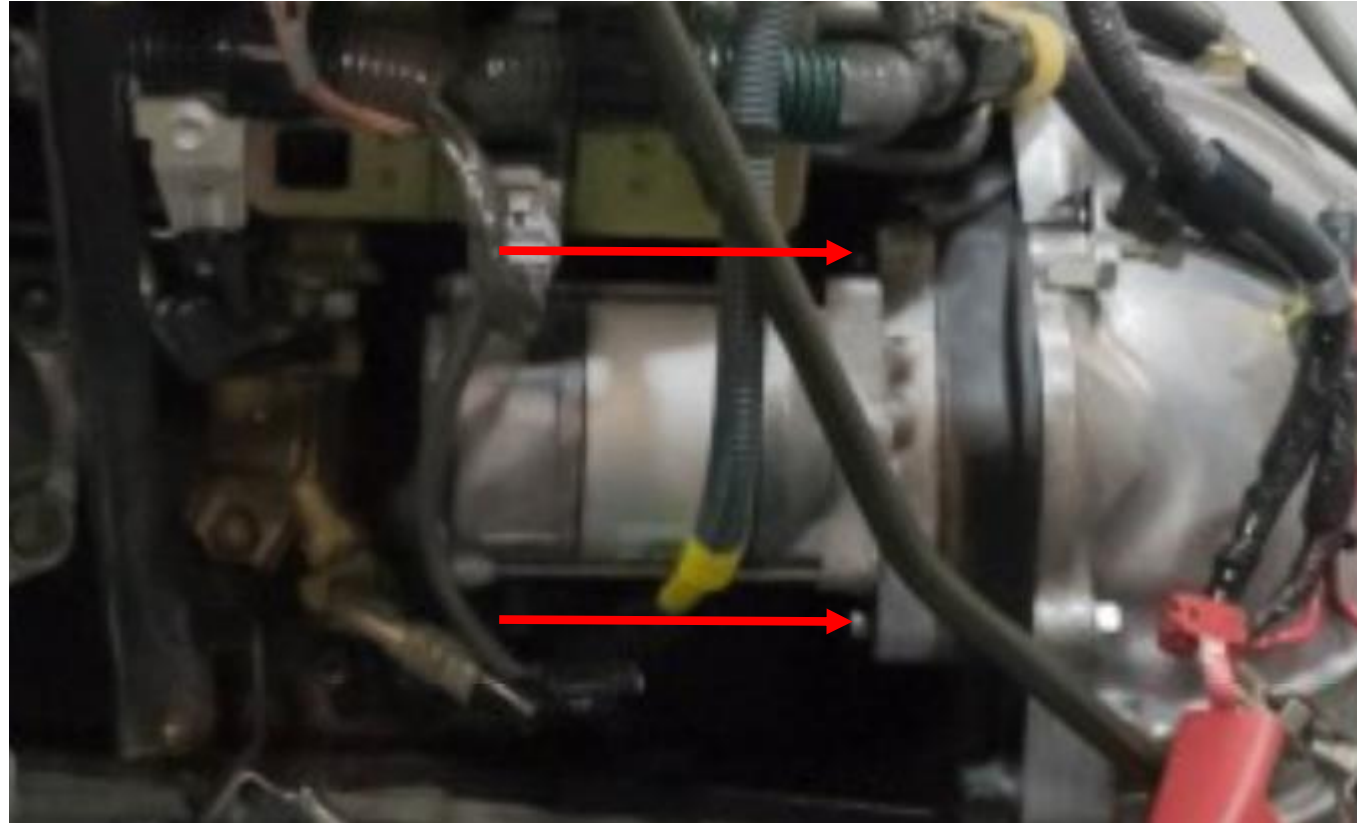
Torque: 83 N·m (850 kgf·cm, 61 ft·lbf)

2. Starter motor installation on engine

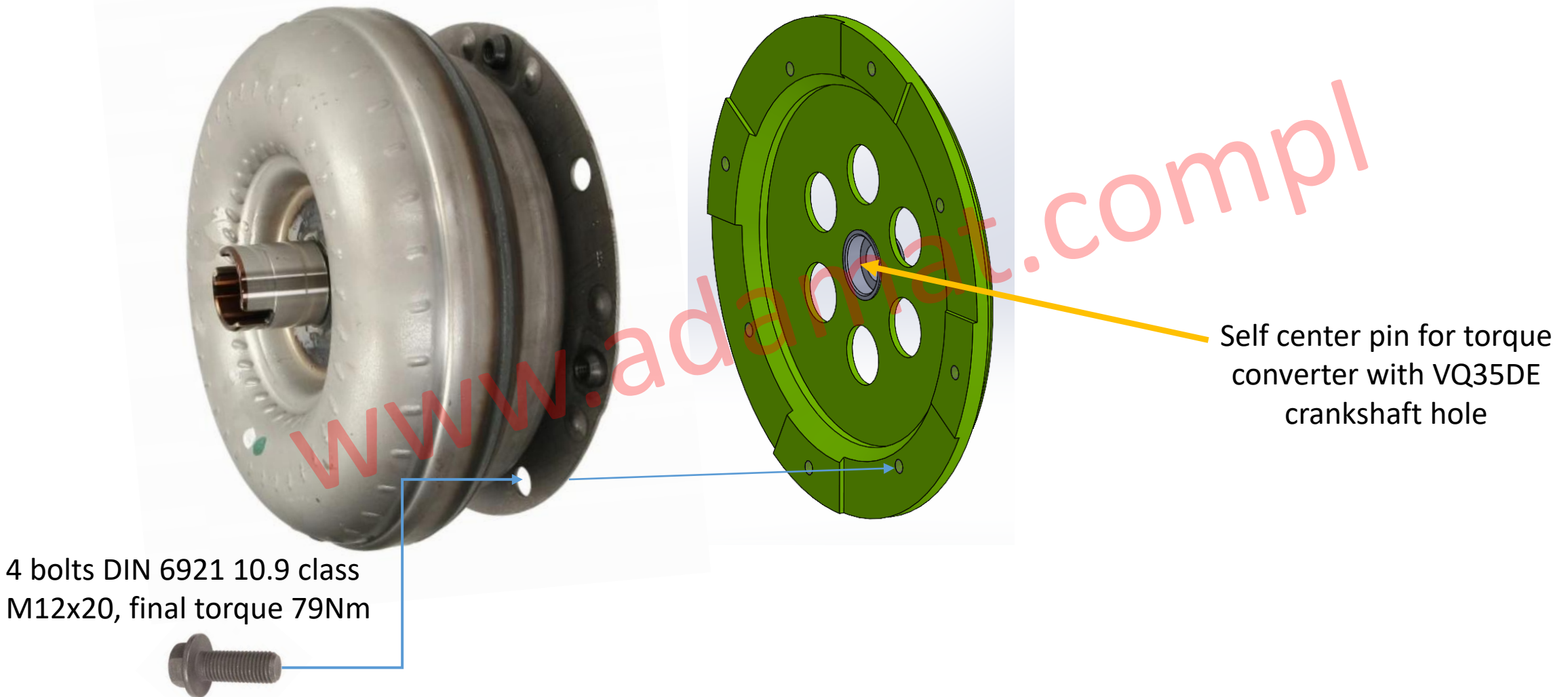
Remove thread from starter holes. Use driller diameter 10 max 10.5mm
USE 2 BOLTS
M10x65



Bolts direction installation

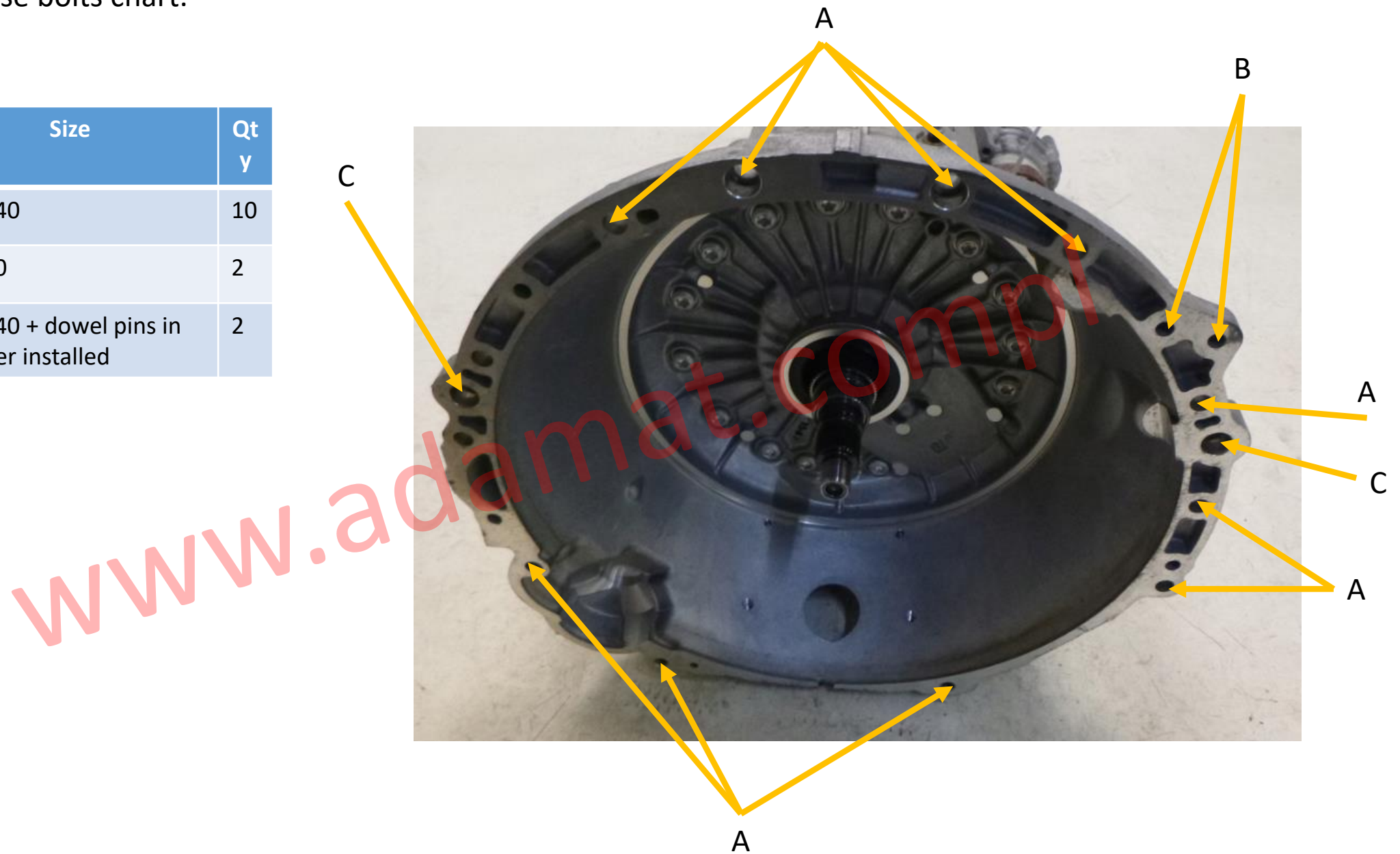


3. Torque adapter installation on converter.



4. Transmission case bolts chart.

No	Bolts type	Size	Qty
A	DIN912	M10x40	10
B	DIN912	M8x40	2
C	DIN912	M10x40 + dowel pins in adapter installed	2



3. Torque adapter installation on converter.

